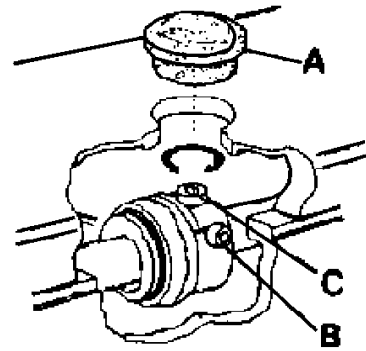


ADJUSTING FEED AMOUNT

Scheme 1:

The adjustment procedure of feed amount is as Follows:

1. Remove seal plug (A) ON top cover.
2. Turn handwheel till screw(B) of feed roller eccentric appears, then loosen screw(B).
3. Turn handwheel till adjusting screw (C) appears at the hole of seal plug.
4. To increase the feed amount,turn adjusting screw(C) counterclockwise and to decrease turn it clockwise.
5. Tighten screw (B) of feed roller eccentric.
Use a hexagonal screwdriver in the accessory box.
(Tightening torque:25kgf.cm.)

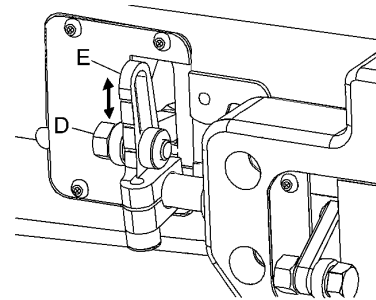


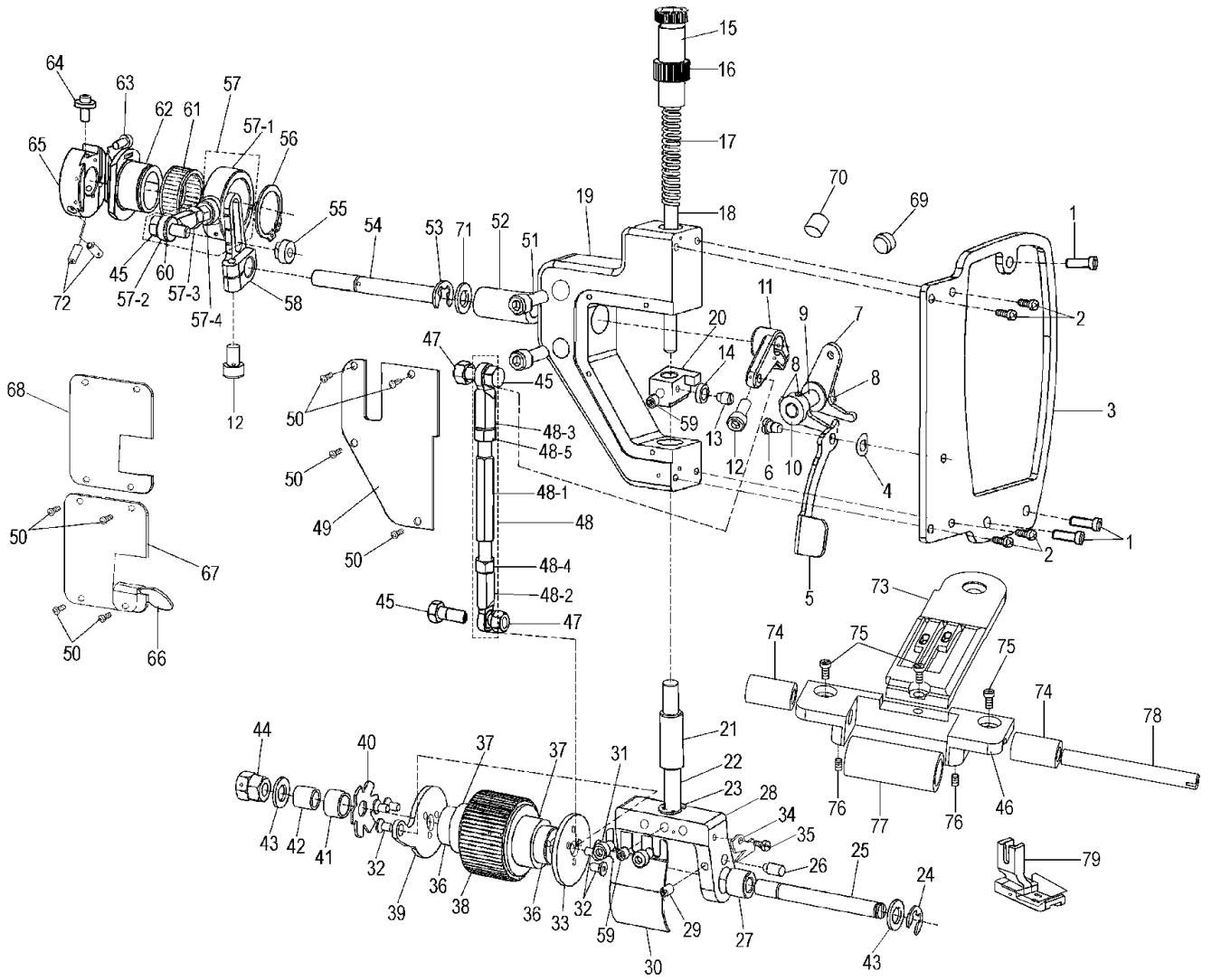
If the cloth feed is not enough, please try the following step(scheme 2)

Scheme 2:

Adjust the cloth feed of the puller mechanism slightly

1. Loosen screw D
2. Moving the screw D and the crank E to adjust the cloth feed, the position going up to increase the cloth feed, the position going down to decrease the cloth feed.
If it cannot achieved to adjust the cloth feed by the
3. Scheme 1, scheme 2 is available.





0056D/P1

No.	Ref.No.	Description	Qt	Remark
1	158220009	Screw SM4.37-40 × 19	3	
2	B040609094	Screw M4 × 10	4	
3	158K00002	Front cover	1	
4	S150603003	Washer GB860-87 φ 6	1	
5	158K00016	Presser foot lifter	1	
6	158K00017	Screw M5	1	
7	158K00012	Knee lifter lever	1	
8	S150299027	Screw GB77-2000 M4 × 4	4	
9	158K00011	Connecting shaft	1	
10	158K00010	Knee lifting lever of back puller	1	
11	158K00006	Left crank	1	
12	S150299004	Screw GB70-85 M5 × 12	2	
13	158K00018	Screw M4	1	
14	158K00019	Slide block	1	
15	022750001--W	Presser regulating thumb screw (RAL7035)	1	
16	022750002--W	Presser regulating thumb nut (RAL7035)	1	
17	158K00020	Presser spring	1	
18	022700012	Presser bar guide	1	
19	158K00001	Bracket of the back puller	1	
20	158K00013	Presser bar lifting bracket	1	
21	158K00021	Bushing	1	
22	158K03006	Presser bar	1	
23	S150617005	Thrust collar GB894.1-86 φ 8	1	
24	B062040764	Collar E6	1	
25	158K03002	The shaft of the puller	1	
26	208R00021	Screw	1	
27	197720007	Shaft sleeve	1	
28	158M00007	Bracket of the puller	1	
29	S150212006	Screw GB77-2000 M5 × 6	1	
30	158K00009	Guard plate	1	
31	116240003	Screw M5x5	2	
32	197720016	Screw SM1/8"(3.18)x44	6	
33	208R00023	Stopping plate	1	
34	110600013	Screw of throat plate	1	
35	S150201002	Plate of back puller	1	
36	158K03005	Bearing bush	2	
37	S150801090	Bearing HF2016	2	
38	158K03003	Back puller	1	
	158K03007	Back puller	1	
39	158K03004	Linked plank	1	
40	197720010	Spring plate	1	
41	197720008	Shaft sleeve	1	
42	197720009	Shaft sleeve	1	
43	110E10003	Washer	2	
44	S150504007	Nut GB6170-86 M8	2	
45	BXF8441009	Screw M6	3	
46	158M00002	Under tug frame	1	

0056D/P1

No.	Ref.No.	Description	Qt	Remark
47	S150503005	Hex nut M6	3	
48	158K04000	Long connecting rod assy	1	
48-1	158K04001	Connecting rod-long	1	
48-2	BXF8447009	Ball joint lever assy (R)	1	
48-3	BXF8445009	Ball joint lever assy (L)	1	
48-4	B089040704	Hex nut M6	1	
48-5	BXF8442009	Left-handed nutM6	1	
49	158K00008	Cover plate	1	
50	S150210009	Screw GB70.2-2000 M3×6	8	
51	S150209056	Screw GB70-85 M6×16	2	
52	158K00004	Dragging set	1	
53	S150617017	Thrust collar GB894.1-86-10	1	
54	158K00005	Dragging shaft	1	
55	158K00023	Screw M6	1	
56	S150617007	Thrust collar GB894-76 φ 25	1	
57	158K02100	Cam-link assy	1	
57-1	158K02002	Cam-link	1	
57-2	BXF8447009	Ball joint lever assy (R)	1	
57-3	B089040704	Nut M6	1	
57-4	158K02003	Connecting rod-short	1	
58	158K00003	Right crank	1	
59	S150299029	Screw GB77-85 M6×6	2	
60	BX07415009	Washer 6	1	
61	S150801040	Needle bearing GB/T307-2005 K252913	1	
62	182F40043	Roller wedge cam	1	
63	S150209033	Screw M4X10	1	
64	182F40044	Adjusting screw	1	
65	158K02001	Cam holder	1	
66	158K00015	Guide plate	1	
67	158K00007	Plate	1	
68	158K00024	Sealing gasket	1	
69	022200011--V	Rubber cap 8.8	1	
70	036500003	Rubber cap 20	1	
71	197400022	Washer	1	
72	S150299012	Screw M4x6	2	
73	158M00001	Throat plate	1	0056D/P1-1
	158M00015	Throat plate	1	0056D/P1-2
	158M00018	Throat plate	1	0056D/P1-3
	158M00016	Throat plate	1	0056D/P1-4B
	158M00017	Throat plate	1	0056D/P1-4A
74	158M00004	Bushing	2	
75	S150209138	Screw GB70-85 M3×6	3	
76	S150212027	Screw GB77-85 M3×6 Z.H	2	
77	158M00003	Under the Roller	1	
78	158M00005	Under the roller shaft	1	
79	158M05000	Presser foot assy	1	0056D/P1-2
	158M06000	Presser foot assy	1	0056D/P1-3